



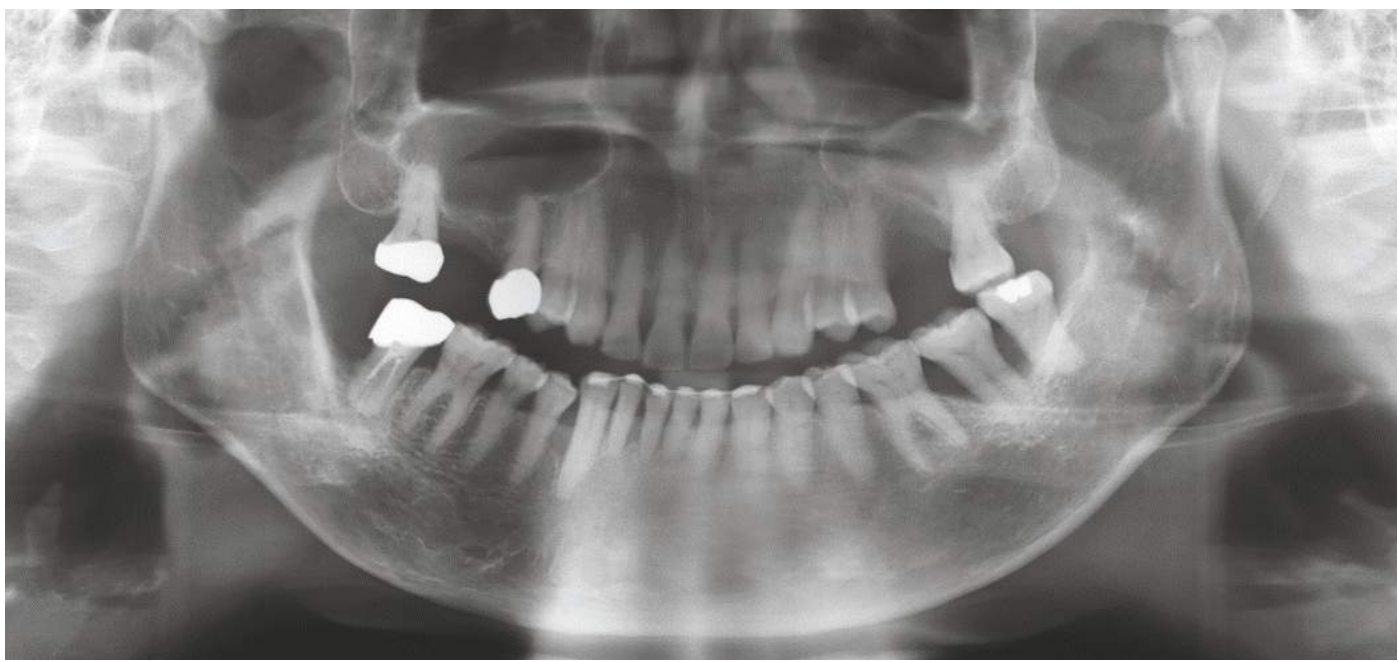
# SINUS AUGMENTATION: BILATERAL, FIRST MOLAR AREA | 36 MONTHS FOLLOW-UP

## CLINICAL CASE

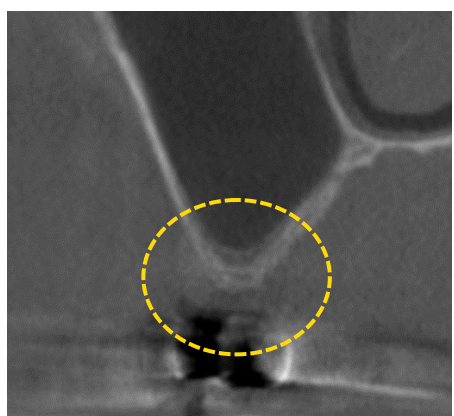
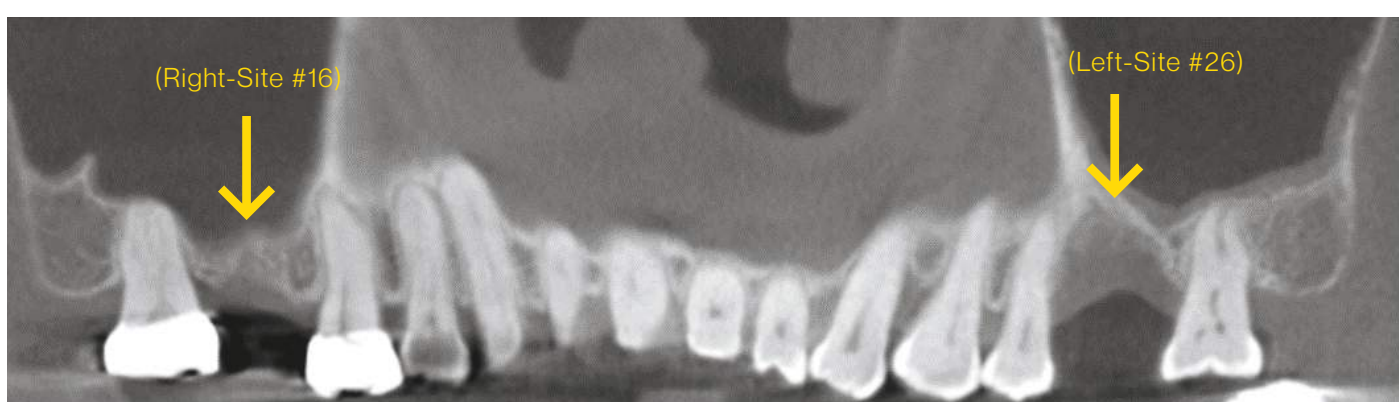
**Lee, Myung Ho, D.D.S.**

CE & FDA Registered Products.

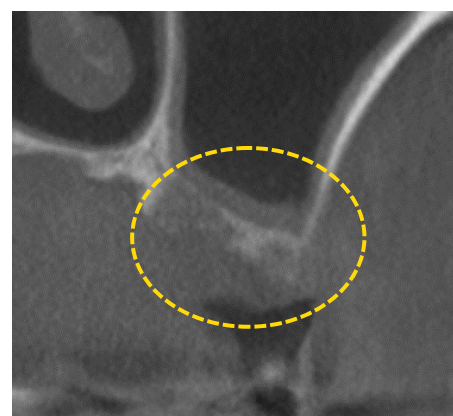
Myung In Dental Clinic  
Cheonju, Cheonrabukdo, Korea



**Figure 1.** The radiograph shows a presurgical panoramic view of a 58-year-old female patient. The operation sites are teeth #16 and #26, planned for sinus graft procedures. In the right maxillary sinus (site #16), an augmentation of more than 10 mm is required for successful grafting. On the left side (site #26), both crestal and sinus augmentation are necessary.

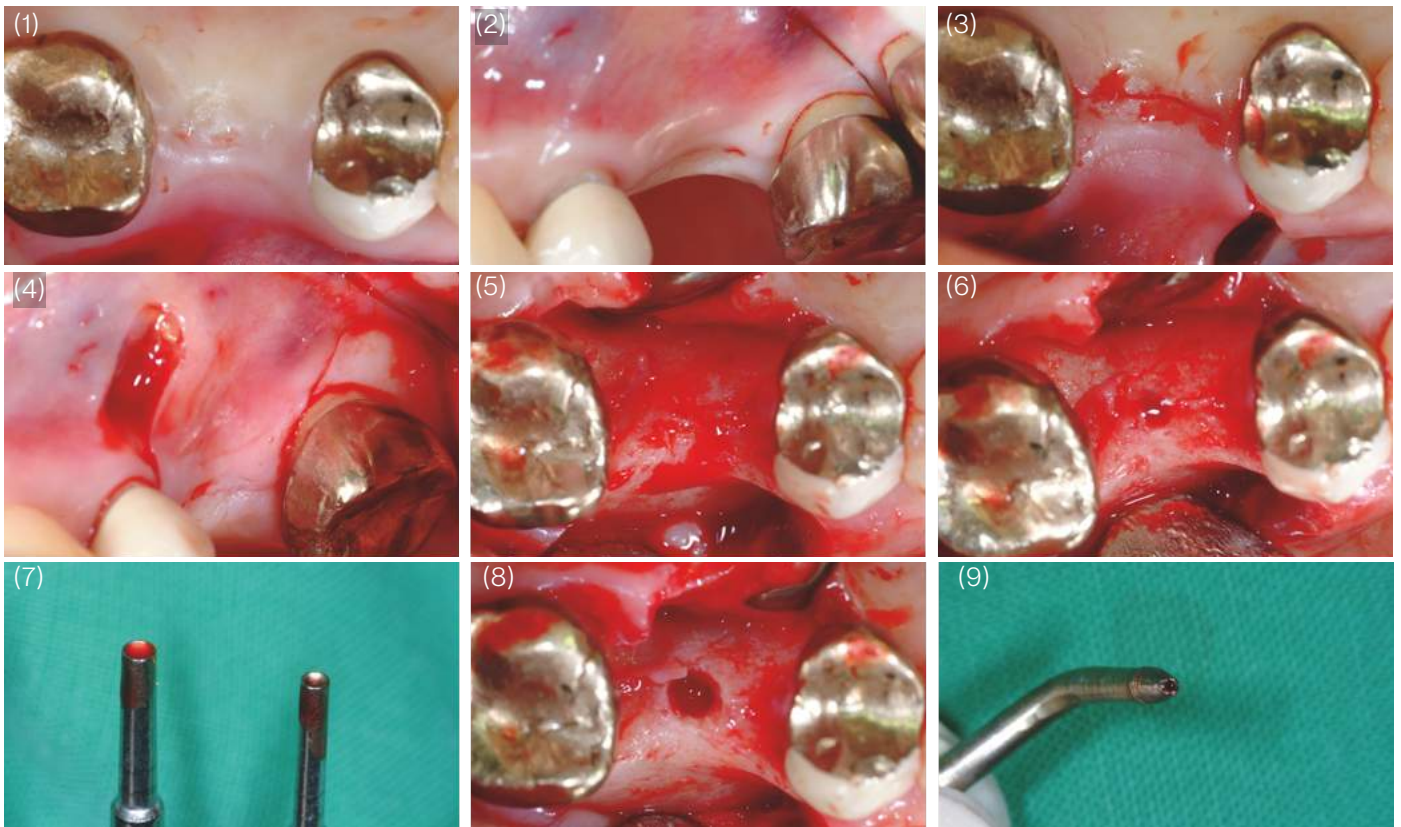


(Right-Site #16)



(Left-Site #26)

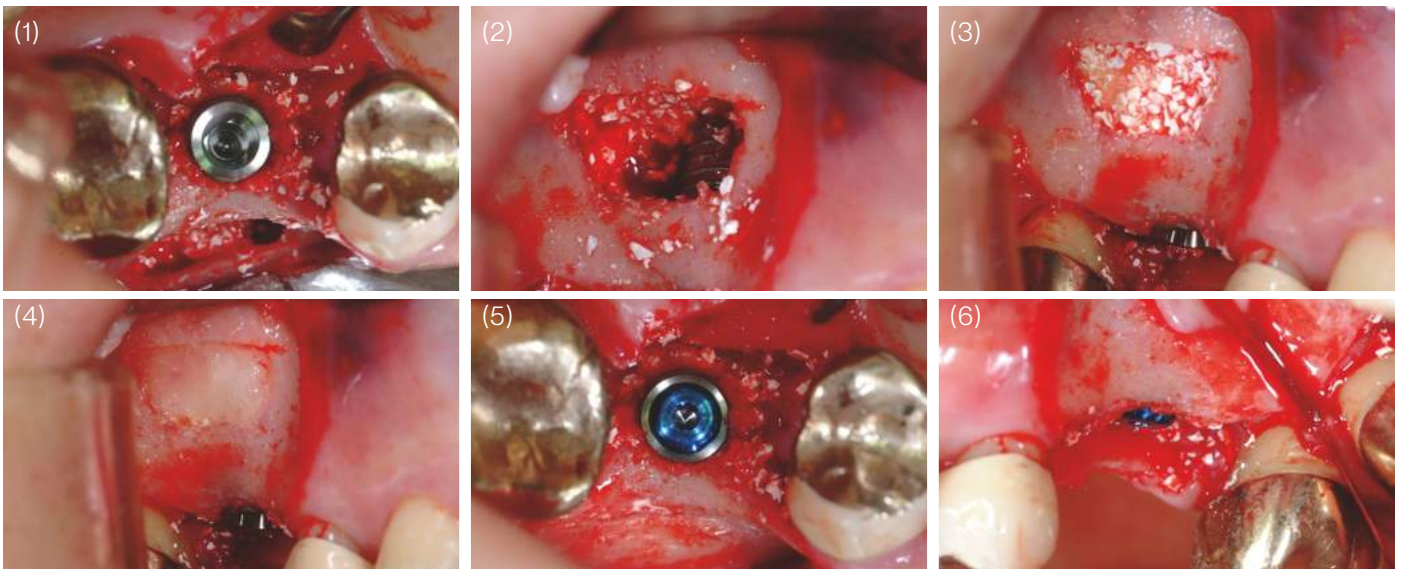
**Figure 2.** The right side exhibits severely reduced ridge height. The left side reveals a compromised alveolar ridge condition.



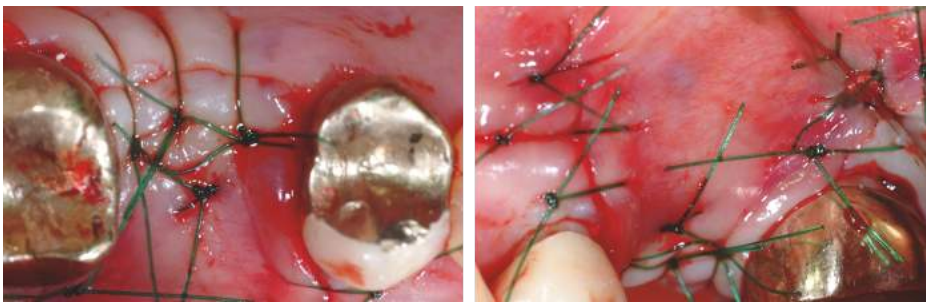
**Figure 3. Teeth 16 area (right side):** (1-2) Linear and vertical incisions were performed in the region of teeth 15 and 17 to access the surgical site. (5) Flap elevation was performed. (6-7-8-9) Osteotome was utilized to prepare the implant site.



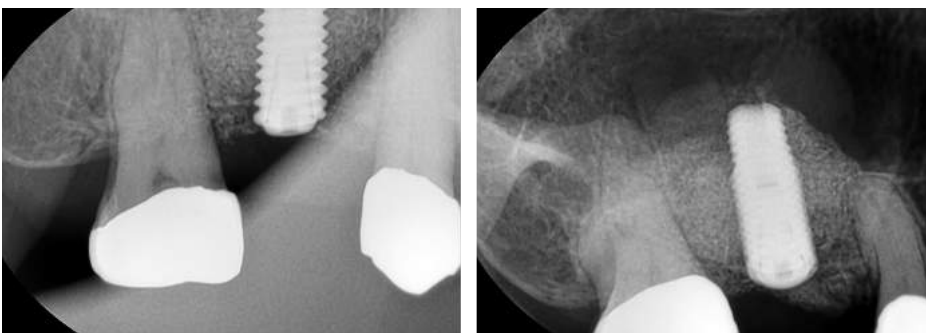
**Figure 4. (1-2)** A mixture of advanced bone graft solution from Chiyewon and PRP was used, and PRF (3-4-5-6) was placed beneath the sinus membrane. (7-8-9-10) A window was created for access .



**Figure 5.** The advanced bone graft solution from Chiyewon was placed inside the sinus window **(2-3)**, and the window plate was repositioned to cover the graft **(4)**.



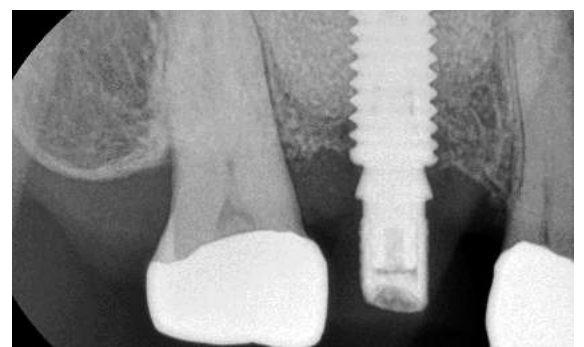
**Figure 6.** A combination of mattress sutures and interrupted sutures was utilized to effectively prevent suture loosening.



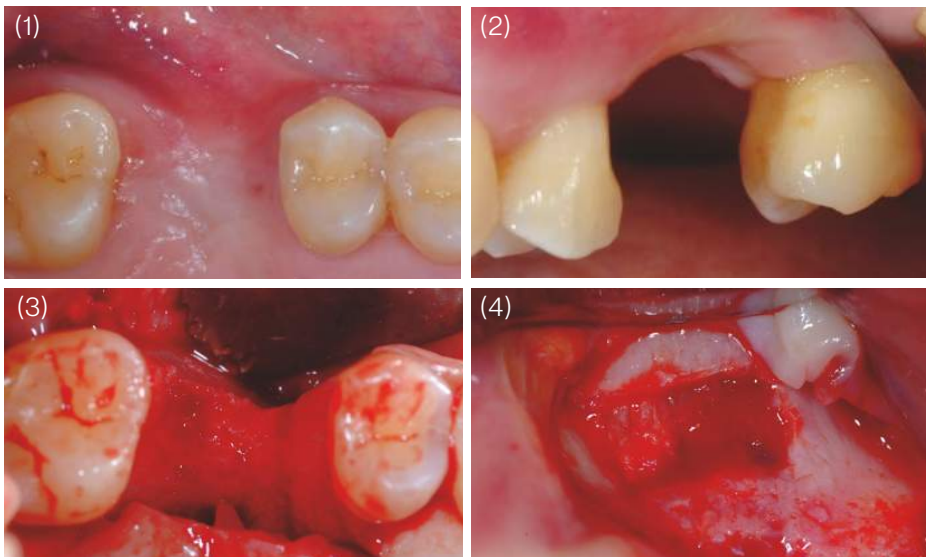
**Figure 7.** Periapical radiographic image **(1 month after surgery)**: The ridge height is significantly minimal, with most of the implant elevation being primarily supported by the bone graft material.



**Figure 8. 6 months ½ and 7 months after surgery:** The bone graft material is sufficiently matured to effectively resist occlusal forces.

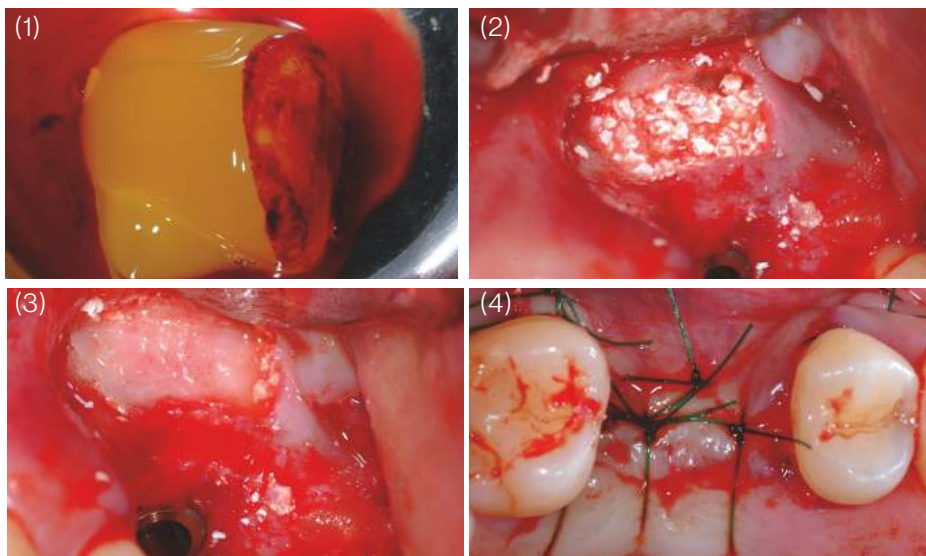


**Figure 9. 8 months after surgery:** The sinus graft was successfully completed following two months of occlusal loading, demonstrating the clinical reliability of the advanced bone graft solution from Chiyewon.

**Figure 10.**

**Teeth 26 area (left side):** Vertical and sinus augmentation were required.

Flap elevation was performed **(3)** and the sinus window has been opened successfully **(4)**.



**Figure 11.** The advanced bone graft solution from Chiyewon has been successfully filled and placed inside the sinus window **(2)**, and Platelet-Rich Fibrin (PRF) was applied over the graft for enhanced healing **(1)**.

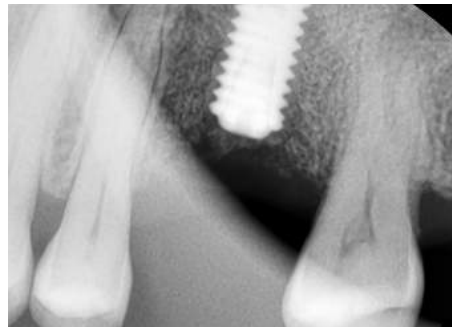
The window plate was repositioned to cover the graft **(3)**. Final closure following implant and graft placement **(4)**.



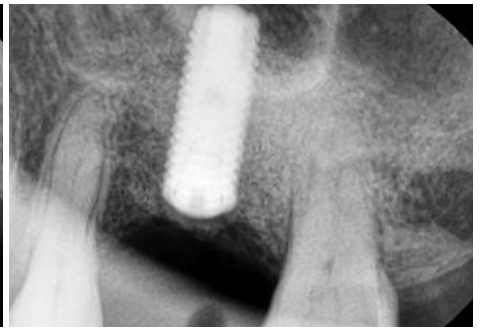
**Figure 12.** The radiograph shows a postoperative panoramic view of the tooth #26 area following the surgical intervention.



**Figure 13.** Periapical radiographic image after surgery



**Figure 14. 1 Month after Surgery**



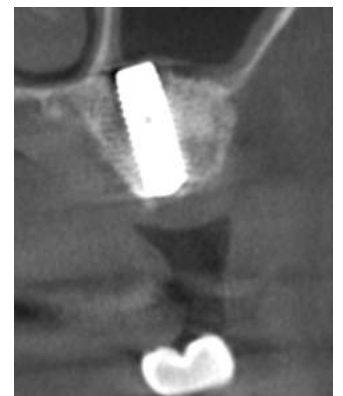
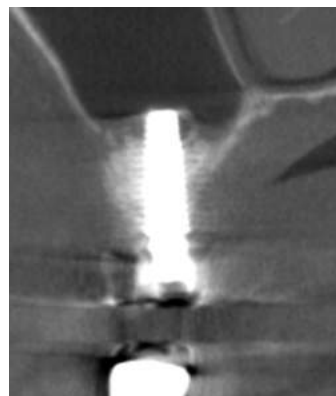
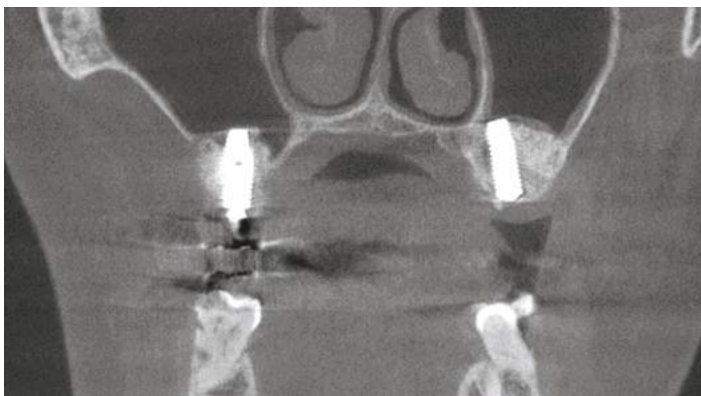
**Figure 15. 3 Months after Surgery:** The advanced bone graft solution from Chiyewon has begun to exhibit a densified image in both the sinus area and the coronal part of the implant, indicating successful osseointegration and bone density increase.



**Figure 16. 5 Months after Surgery:** A well-matured image of the the bone graft has been observed in the sinus area and the coronal part of the implant.



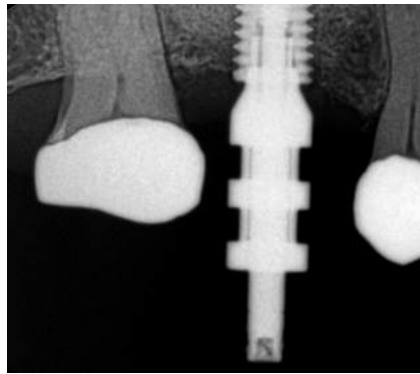
**Figure 17. 6 Months after Surgery:** The bone graft has shown its maturity and is now deemed unrecognizable in imaging analyses. This indicates that the graft has effectively integrated with the surrounding bone.



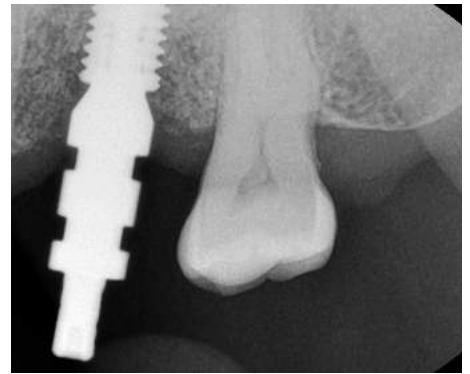
**Figure 18. 6 Months after Surgery:** CBCT images show that the advanced bone graft solution from Chiyewon exhibits well-defined densification on both sides of the sinus.



**Figure 19. 8 Months after Surgery** (Left-Site #26).

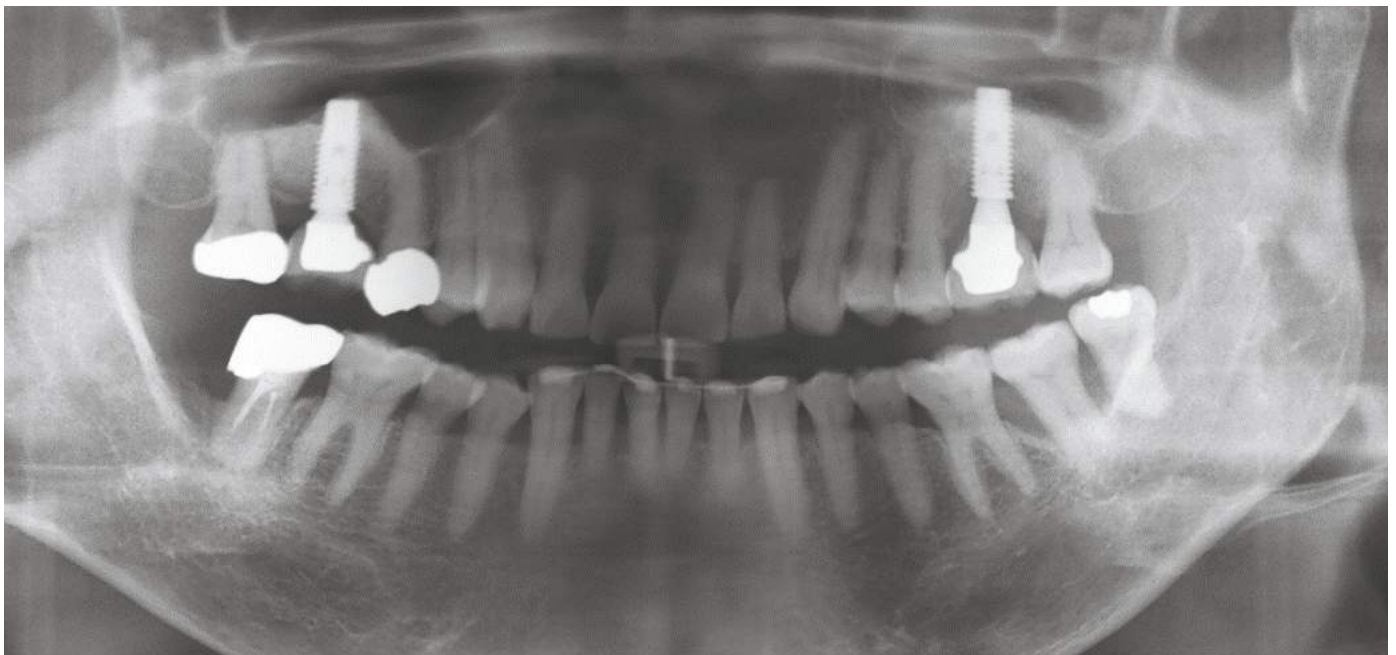


**Figure 20. 13 Months after Surgery:** (Right-Site #16).

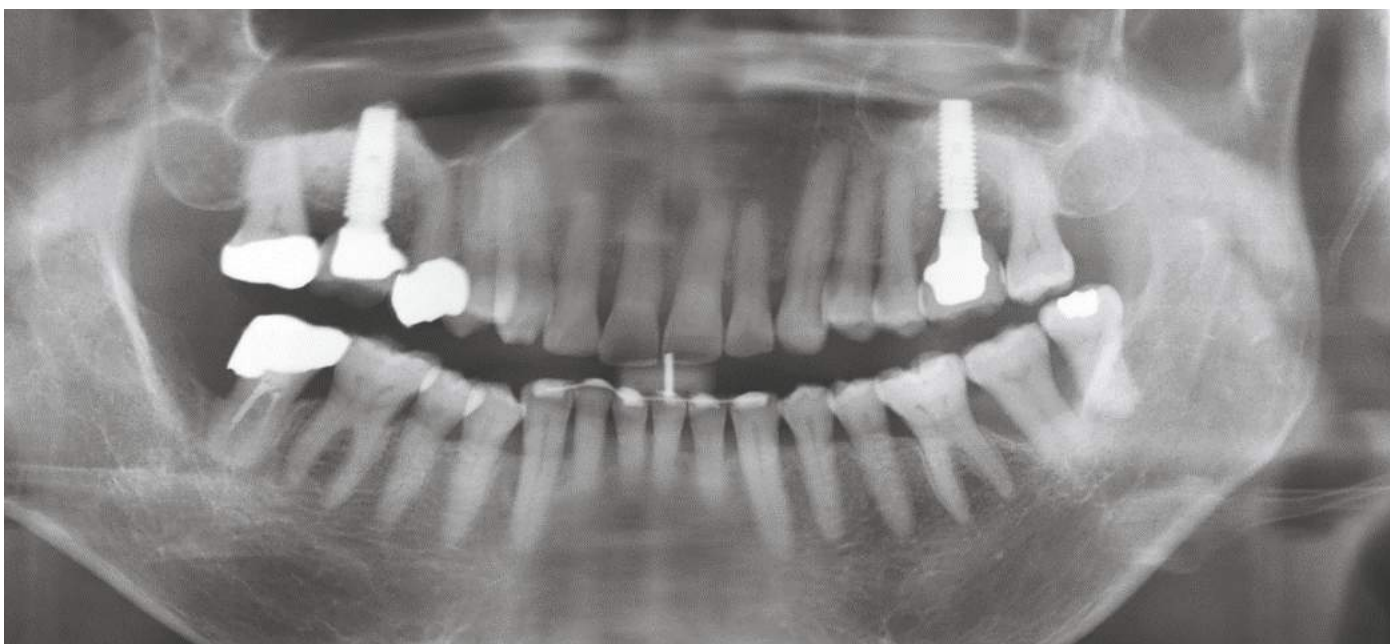


**Figure 21. 13 Months after Surgery** (Left-Site #26).

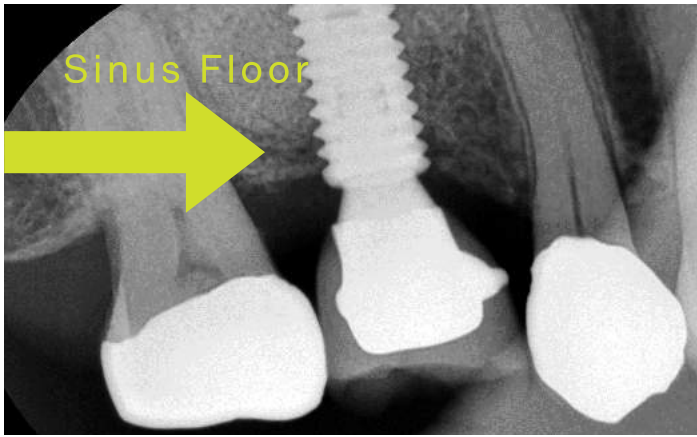
**Figure 22.** Radiopaque and periapical radiographic images show a follow-up of over 3 years. Bone levels remained consistent over 3 years, confirming long-term regenerative success.



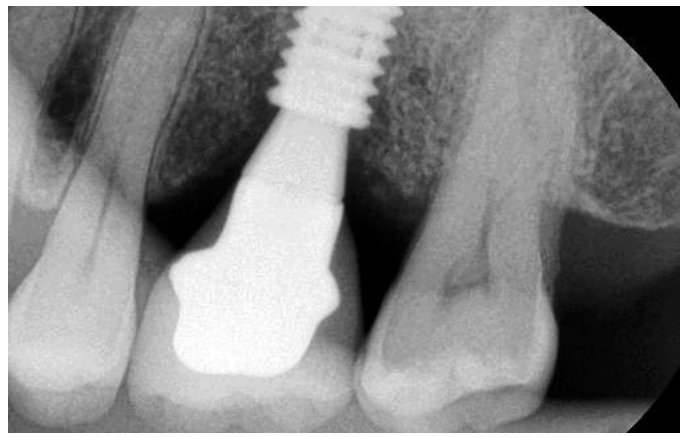
**15 Months** after Surgery.



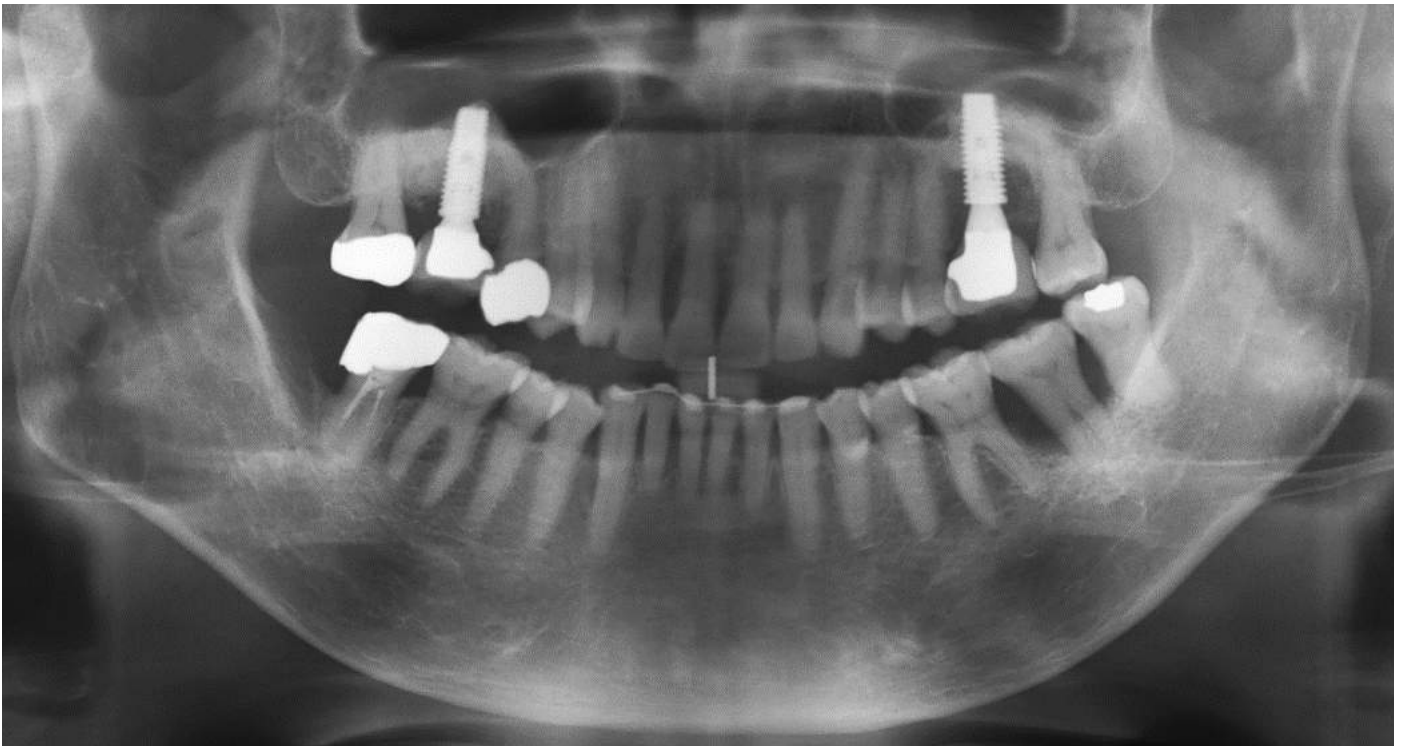
**24 Months** after Surgery.



**Figure 23.** Right-Site #16: **24 Months** after Surgery.



**Figure 24.** Left-Site #26: **24 Months** after Surgery.



**Figure 25.** **36 Months** after Surgery.

#### DISCUSSION:

Radiopaque and periapical radiographic images show that after 6 months, the graft had effectively integrated with the surrounding bone. Bone levels remained **consistent over 24 months** and **up to 36 months after surgery**, confirming **long-term regenerative success**.

This clinical case demonstrates the **clinical reliability** of **the advanced bone graft solution from Chiyewon** for **sinus augmentation procedures**, even in situations requiring **more than 10 mm of augmentation**.

*Thank  
You*