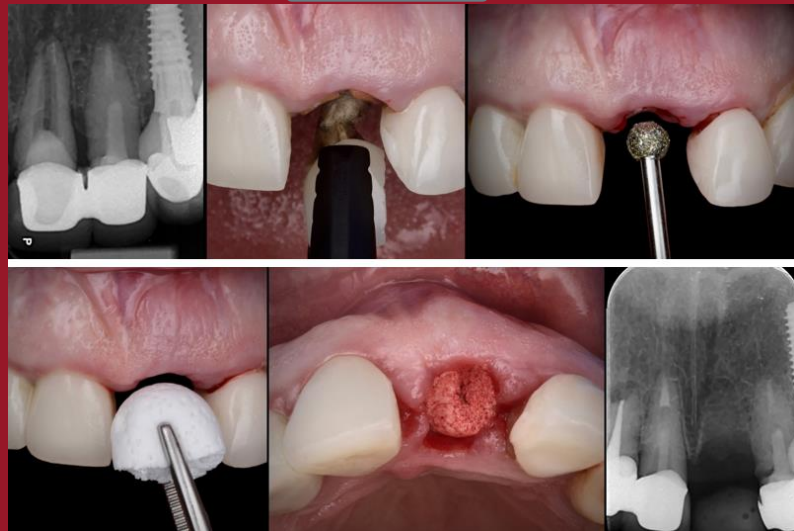


SOCKET GRAFTING WITH POWERBONE FLEXIBLE CONE IN A OPEN HEALING SITUATION.

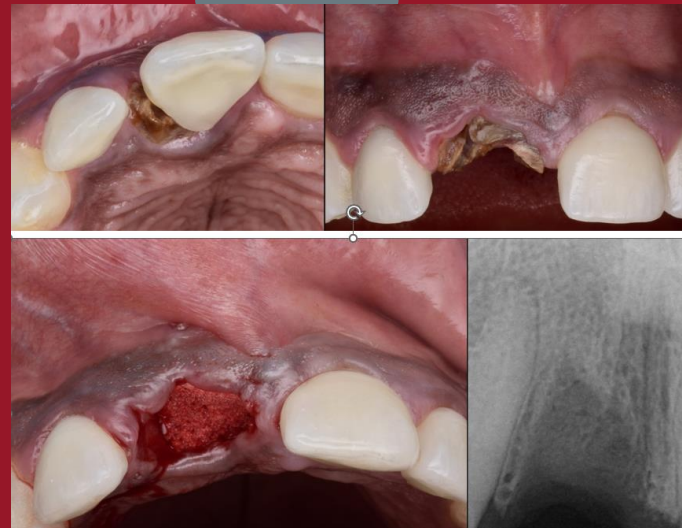
Leventis M, Nathalal D, Parmar A, Rodrigues P, Teague R.

Powerbone Socket Cone (1) is a self-retaining, fully resorbing synthetic material containing silicate substituted beta-tcp embedded in a polylactide and caprolactone matrix. Powerbone Socket Cone Graft is designed specifically for simple post extraction socket placement without a membrane. The authors present first results from a multi-centre series of 10 patients (39-58 yrs) with this material and other refinements ahead of implant driven restoration.

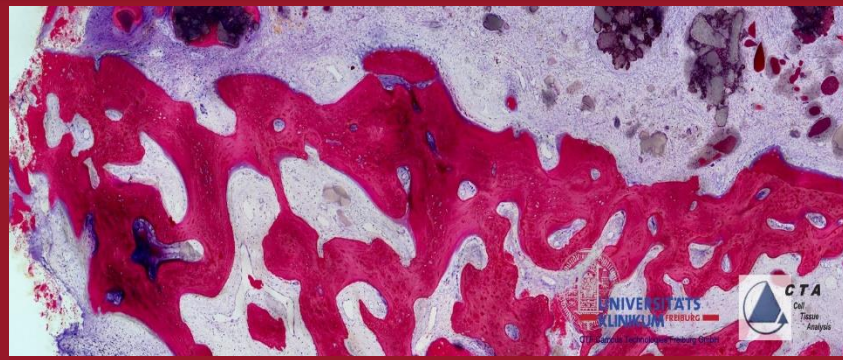
Case 1



Case 2



Case 3



RESULTS: Post operative healing was uneventful in all cases. Further histology, Implant ISQ and torque measures will be presented next year.

DISCUSSION: Simplification of the socket grafting protocol will lead to wider adoption. First results with Powerbone Socket Cone Graft are encouraging. The placement is extremely simple and requires no special tools, negates a barrier membrane and does not require complex flap management techniques to close making it ideal for general practice. Further results to follow.

Contact: Dr Nathalal, Kingston Dental Clinic, UK. Egas Moniz University, Portugal. dipilpn@gmail.com